

Documentation of a New *Titanic/Olympic* Find: Support Stanchions Under the Poop Deck

By Bob Read, D.M.D.

Introduction

It is not often that new structures are discovered relating to *Titanic/Olympic*. Fortunately on April 26, 2019 Alexey Chekaev posted such a new find on the Facebook group [RMS Titanic Model Research and Tech](#). The discovery was made in a Getty photo of *Olympic*. In the photo is seen what appears to be stanchions at the fore end of the underside of the poop deck just aft of the stairways. The reason these structures were never discovered before is because there were very few photos taken at such an angle as to reveal these stanchions. After examining other photos, two additional stanchions were discovered. This article is being written to document this discovery because retrieving such material from Facebook forums is not easy. This article will give an explanation of the discovery and provide easy access to it in the future.

Photos

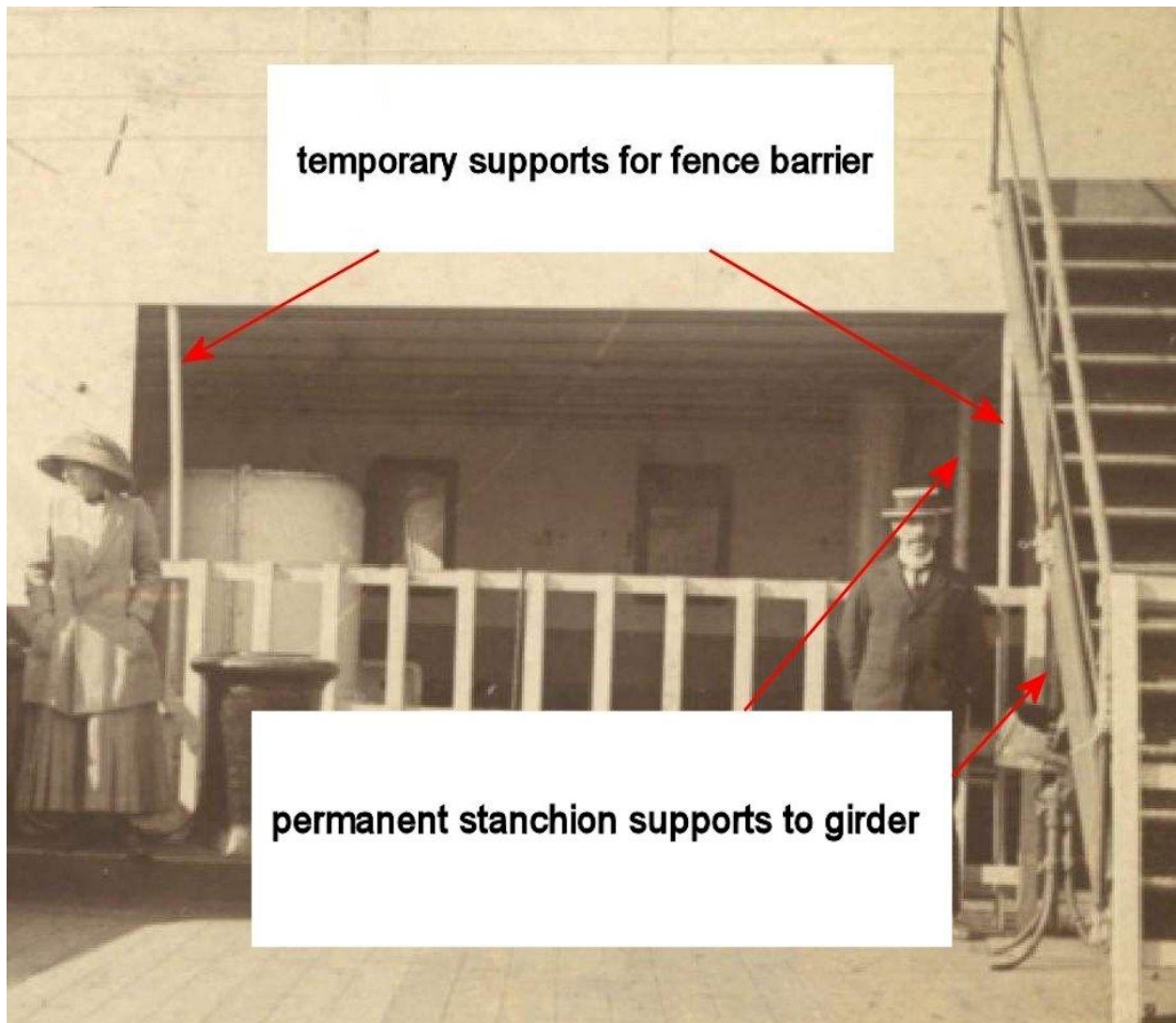
The first photo in which the original discovery was made is shown in Figure 1. Arrows point to the stanchions which were originally discovered.



Support stanchions under forward poop deck

Figure 1

The second photo taken from the starboard aft well deck looking aft shows a second stanchion aft of the forward one. These are labeled “permanent stanchion supports”. What could be confusing in the photo are two temporary stanchions to support a barrier.



Permanent stanchion supports to poop deck girder

Figure 2

Figure 3 is another photo which shows the same structures from a slightly different angle.

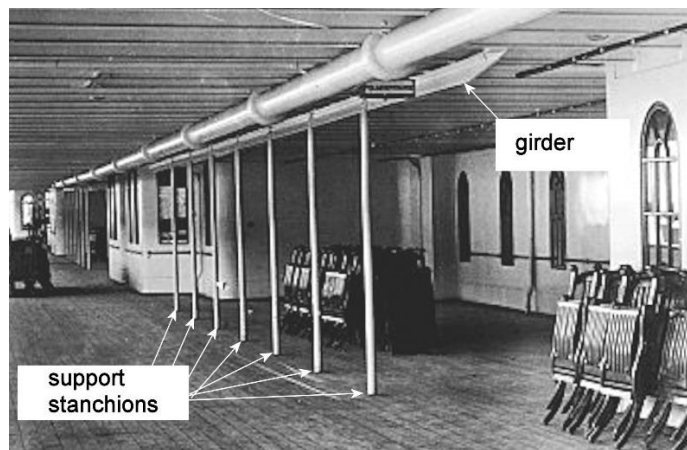
Go to next page



Permanent support stanchions to poop deck girder

Figure 3

The same kind of stanchions can be seen supporting longitudinal girders under decks in other areas. In Figure 4 we see a girder under the starboard boat deck with support stanchions which are seen from Promenade Deck A.

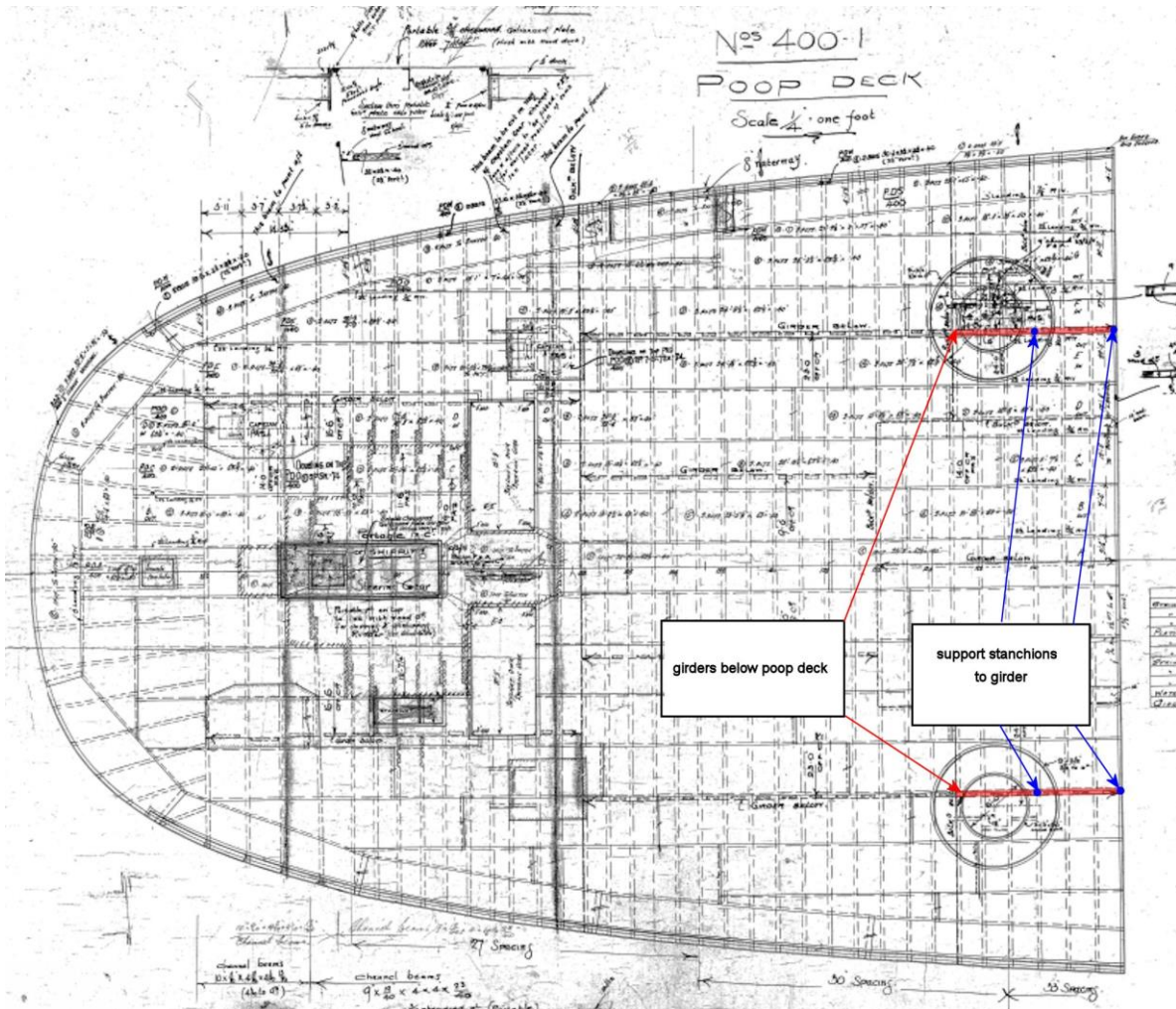


Support stanchions to boat deck girder

Figure 4

Drawings

The location of the support stanchions can be seen in the *Titanic/Olympic* Poop Deck Iron plan. The visible portion of the girder can be seen in red on the drawing and the visible support stanchions are seen in blue in Figure 5.

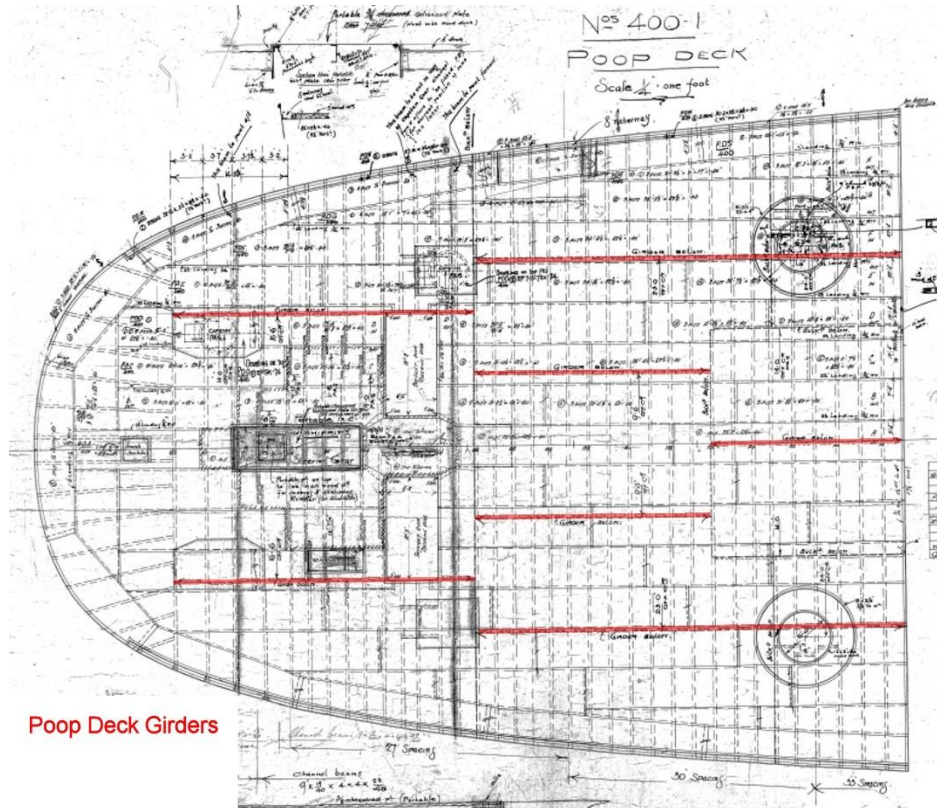


Poop deck iron plan for *Titanic/Olympic*

Figure 5

Go to next page

The poop deck of *Titanic/Olympic* had a number of girders with support stanchions. Only the two visible girders and four support stanchions can be seen from the aft well deck. Figure 6 shows the girders under the poop deck. Inside the deckhouses under the poop deck there were identical support stanchions to these girders.



Girders under *Titanic/Olympic* poop deck

Figure 6

Analysis

It is unusual that a discovery of this type could be made at this late date in *Titanic* research. The primary reason is because very few photos have ever been taken which could reveal them since they were usually hidden by the stairs from the aft well deck to the poop deck. Since the photos we have are exclusively from *Olympic*, some would ask how we can say that this discovery also applies to *Titanic*. The answer is that the Poop Deck Iron plan is labeled 400-01 which indicates that these structural elements were the same on both *Olympic* and *Titanic*.

Summary

This article is written to document a recent discovery of support stanchions under the poop deck of *Titanic/Olympic*. By documenting this discovery, it can be referred to in future discussions.

