

Titanic's First Class Smokeroom Bar Windows

by Bob Read, D.M.D.

Introduction

Many of the research articles I have written have dealt with areas of *Titanic* which are controversial. This article is no exception. Almost all of the externally visible structures of *Titanic* have been identified. The function of some might not be clear but at least we have identified them structurally. This article will deal with one of the remaining structures which has not been identified with complete clarity. These are windows on the aft face of the raised roof over the first class smokeroom which serve the smokeroom bar. The question which this article will try to answer is whether there are two or three windows at this location on *Titanic*.

Discovery

The first indication that there were windows on the aft face of the raised roof over the first class smokeroom was a photo taken in a 1986 expedition to *Titanic*. This photo is shown in Figure 1.



Figure 1

The photo appears to show two round windows. These windows are identified in Figure 2.

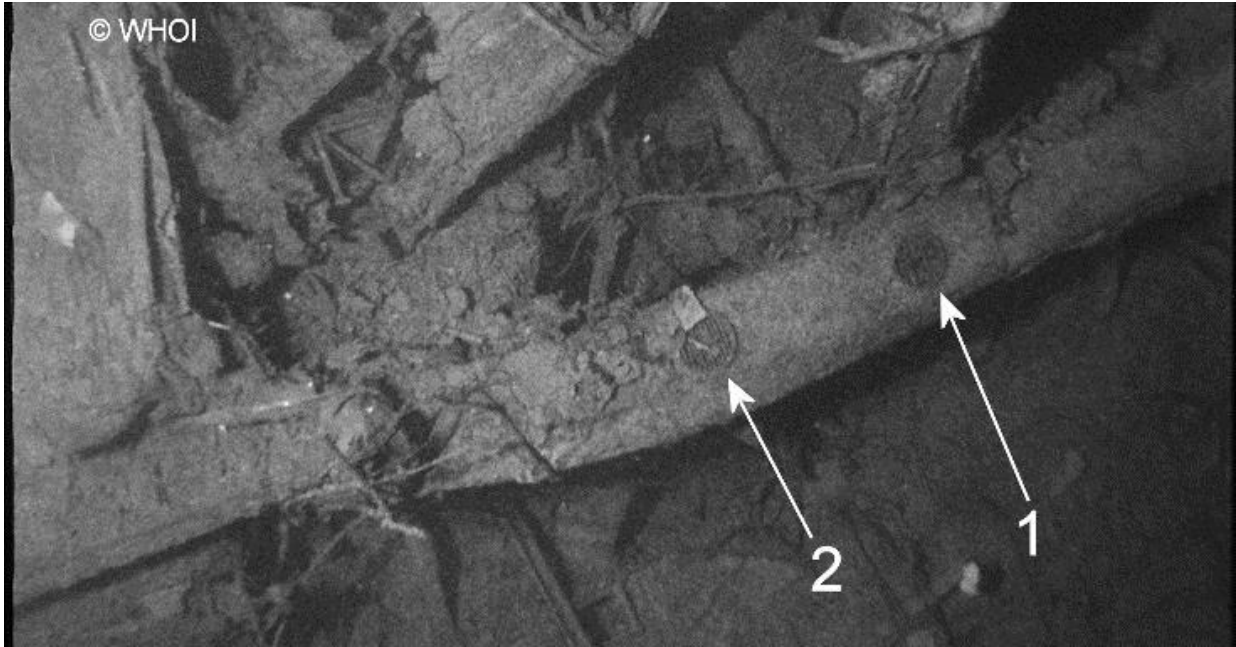


Figure 2

Where the controversy arises is that some have pointed to an object that they believe is a third window. This object is identified in Figure 3.

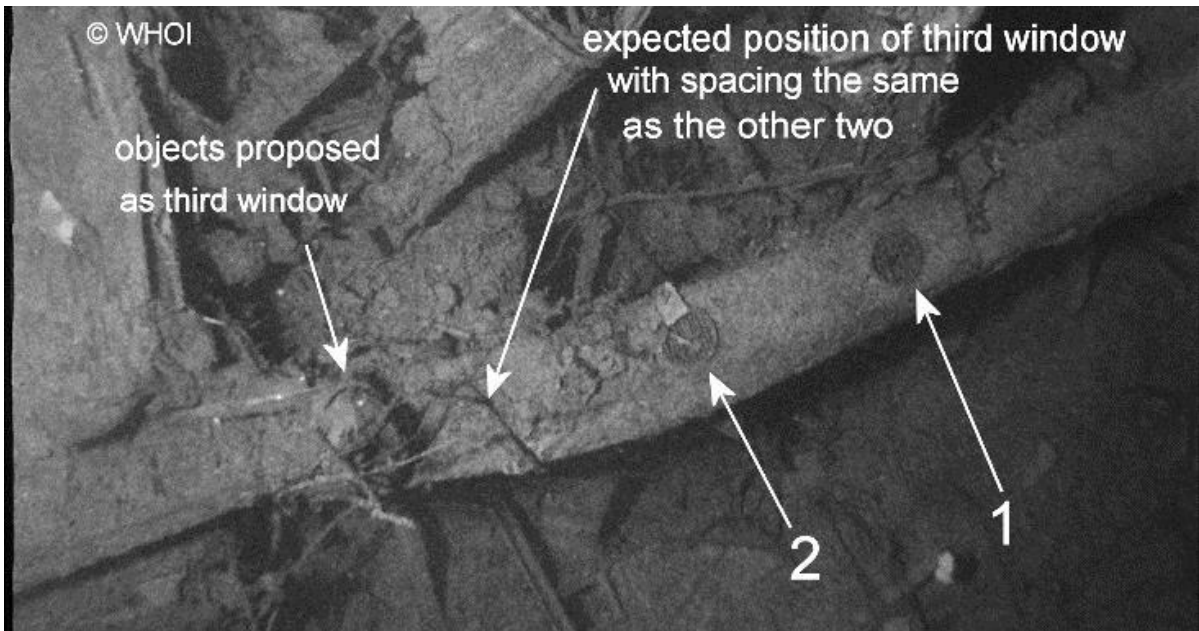


Figure 3

The problem is that it is located further to starboard than would be expected if the windows had equidistant spacing. In Figure 3 I have pointed to the location where a third equidistantly spaced window would be located. In these photos what is identified as a third windows appears to be a mass of tangled rigging and wreckage.

In 2010 a mosaic of the area was created. The pertinent area is shown in Figure 4



Figure 4

Again the two windows which were seen in the 1986 photo are identified. Also as in the 1986 photo, the area where one would expect to see a third window on the starboard side is indicated, but again there is no obvious window.

There are researchers who have claimed to have seen a third smokeroom bar window in wreck footage that is not widely available. However, nobody has been able to provide evidence beyond what has been offered in the first part of this article. If someone comes forward with

convincing new evidence, it will be gladly received and evaluated. Until then, we only have what we have. It is my opinion that no new contradictory evidence will be forthcoming.

Olympic Evidence

An *Olympic* photo surfaced a few years ago which re-ignited the debate. This photo is shown in Figure 5.



Figure 5

As you can see, it clearly shows only two smokeroom bar windows.

Some have thought that *Olympic* originally had two smokeroom bar windows but that this was upgraded to three on Titanic. I believe that *Olympic* did not originally have these windows.

Go To Next Page

Figure 6 shows the aft face of the raise roof over the smokeroom at frame 71A.

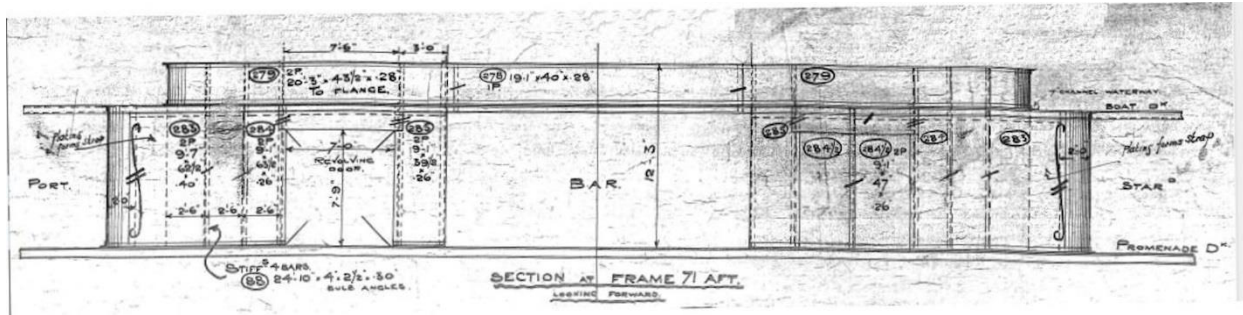


Figure 6

This is an original plan of the A deck deckhouse for *Olympic*. In Figure 7 we see the starboard side of the smokeroom deckhouse .

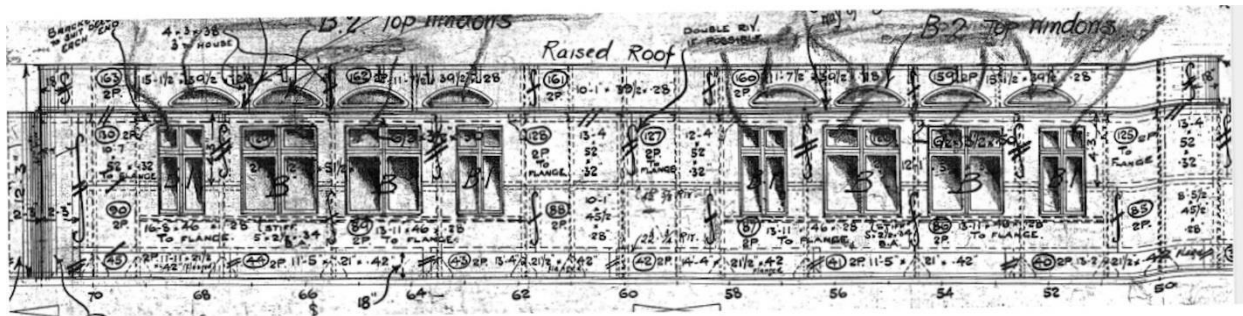


Figure 7

On the raised roof portion of the deckhouse we see the semicircular windows. What this indicates is that this plan showed the windows in the raise part of the deckhouse. So the absence of any windows on the aft face of the raised roof of the smokeroom would appear to indicate that these windows for the bar were not part of *Olympic's* original design.

As with many things concerning *Olympic* "as designed", improvements were later made. Quite often the deficiencies found during *Olympic's* first year of service were corrected on *Titanic* before they were added to *Olympic*. I believe that *Titanic's* smokeroom bar window configuration is reflected in what we see on later *Olympic* because it was first added to *Titanic* before being added to *Olympic*.

Illustration of Proposed *Titanic* Arrangement

To illustrate how I believe the two smokeroom windows on *Titanic* were positioned, I have drawn an aft elevation shown in Figure 8.

Go to Next Page

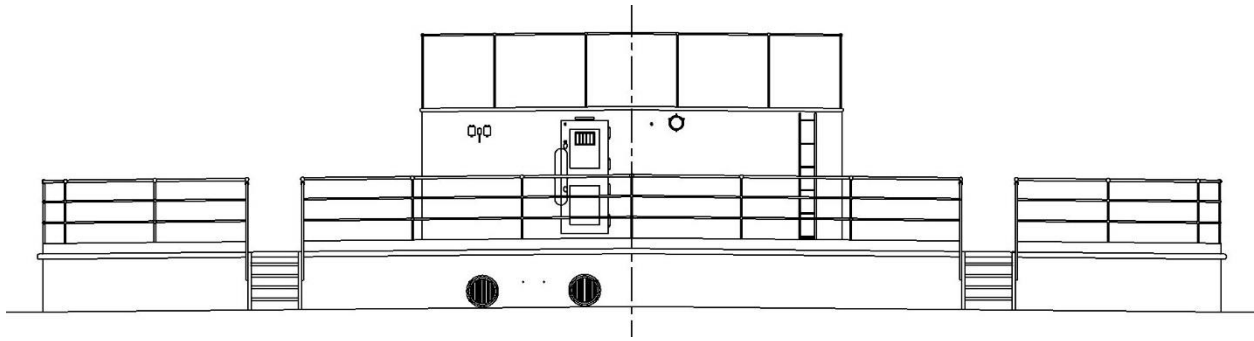


Figure 8

In Figure 9 we see a general arrangement plan showing the smokeroom bar.

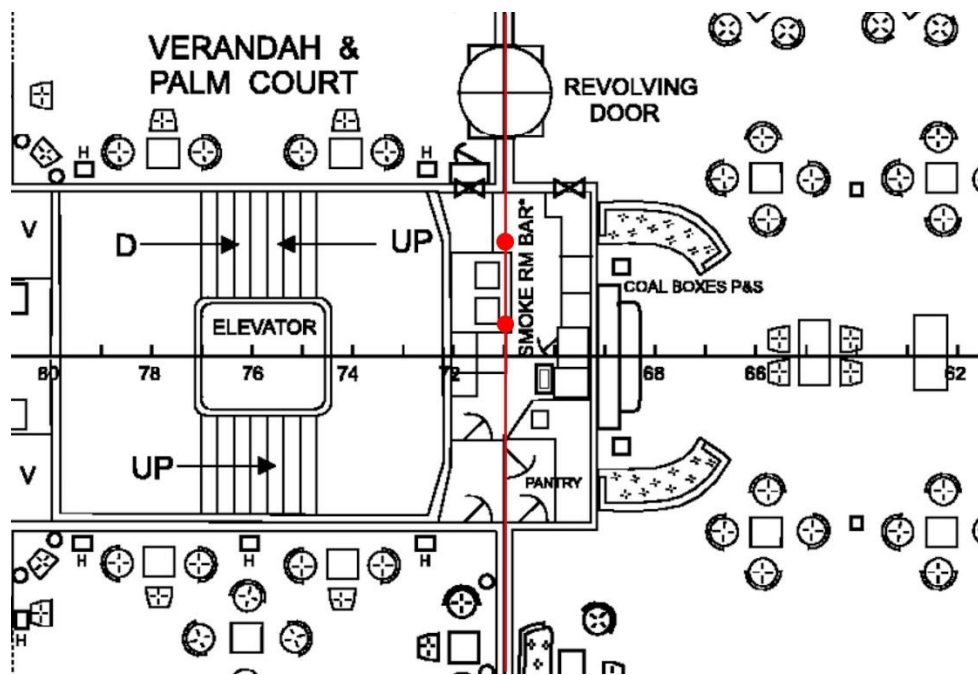


Figure 9

The red line indicates the location of the aft bulkhead of the smokeroom at fame 71A. I have drawn two red circles to indicate the positions of the windows over the smokeroom bar.

Conclusion

In this article the best available evidence has been examined to try to determine whether there were two or three windows on the aft face of the raised roof over the first class smokeroom of *Titanic*. These windows served the smokeroom bar. After examining the evidence, I believe that it supports the presence of two windows rather than three.